

ULTIMATE CABINET

COMPONENTS



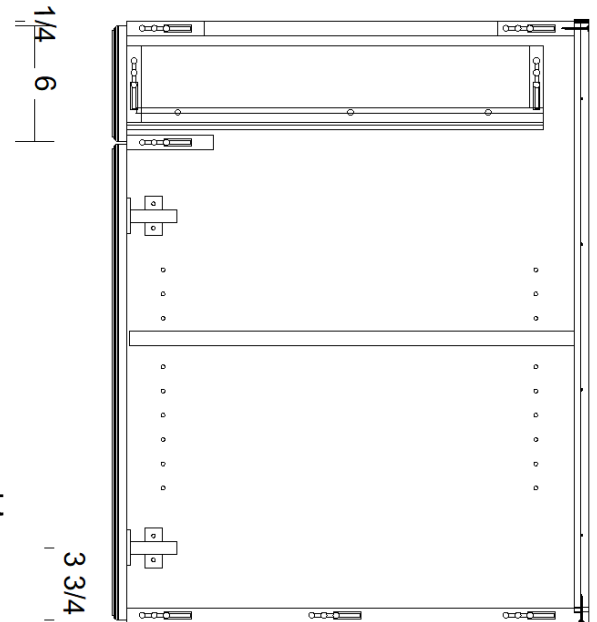
STANDARDS



ULTIMATE CABINET
COMPONENTS

Base Cabinet Standards:

- Hinge drilling- 3-³/₄" edge to center
- 6" top drawer front height
- Drawer banks are equal heights below top drawer
- Custom drawer spacing available in comments
- All drawer glide drilling per manufacturers guide
- Lockdowel slots milled .5mm long to accommodate minor material differences
- Adjustable shelf holes 5mm on 32mm centers
- Drawer stretchers and nailers 4-¹/₂" wide
- Drawer stretchers between each drawer
- Sink bases provided with a Blank Panel to mount false front. Sent in box interior color with edgebanding to match job.
- Tops are made solid with a cutout for easy installation
- ³/₄" solid back with rabbet for the most durable boxes

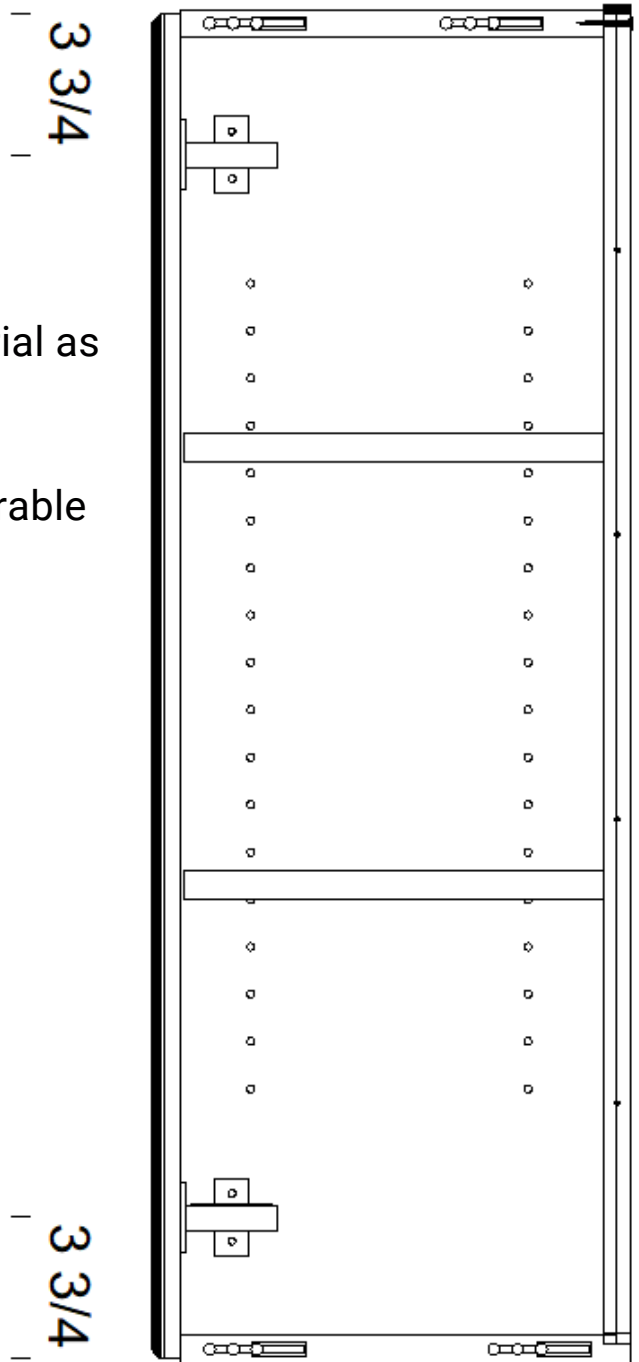




ULTIMATE CABINET
COMPONENTS

Wall Cabinet Standards:

- Hinge drilling 3-³/₄" edge to center
- 5mm adjustable shelf holes on 32mm centers
- 1/4" reveal above doors
- Bottom of bottom finished in same material as interior unless noted otherwise
- 3/4" solid backs with rabet for the most durable boxes





ULTIMATE CABINET
COMPONENTS

Tall Cabinet Standards

- Hinge center 3-³/₄"
- Third hinge on door as needed
- Fixed shelf per catalog
- Will require a longer non-standard skid which will raise shipping costs marginally
- 5mm on 32mm centers for adjustable shelves
- ³/₄" solid backs with rabet for the most durable boxes

